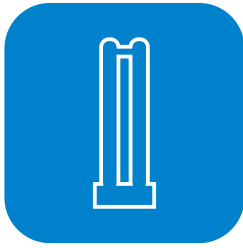


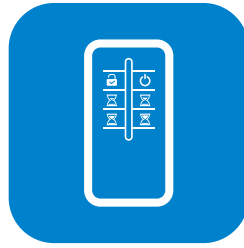
Specifications

Model No.	Power	Voltage	Wave length	Lamp type	Lamp base	Hold time	Lamp size	Operating Temp (°C/°F)	Life span	Weight (lbs=kgx2.2)	Color
DKU-10601-6U	60W±15%	100-120V 50-60Hz	254nm	UVC	E26	30/60/90/120 mins	E26-D3.7" x L12.68"	-10~35°C 14~95°F	9,000H	E26 NW:0.92kg GW:1.14kg	Matt Silver
DKU-10601-9U	60W±15%	100-120V 50-60Hz	254nm	UVC	E39	30/60/90/120 mins	E39-D3.7" x L13.03"	-10~35°C 14~95°F	9,000H	E39 NW:0.95kg GW:1.17kg	Matt Silver
DKU-10801-9U	80W±15%	100-120V 50-60Hz	254nm	UVC	E39	30/60/90/120 mins	E39-D3.7" x L16.97"	-10~35°C 14~95°F	9,000H	E26 NW:1.10kg GW:1.35kg	Matt Silver
	80W±15%	220-240V 50-60Hz	254nm	UVC	E26 E27 E39 Ex39 E40	30/60/90/120 mins		-10~35°C 14~95°F	9,000H	E39 NW:1.12kg GW:1.37kg	Matt Silver

Features



Quartz tube



Wireless control



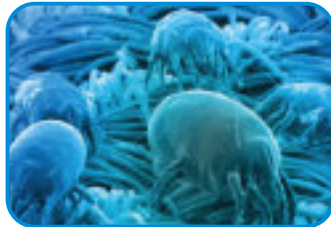
20S delay start-up



Ozone-free UV



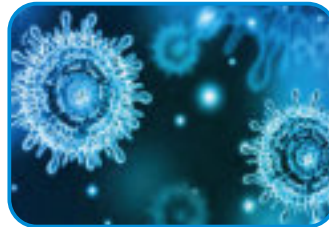
Microwave and PIR Sensor Built-in



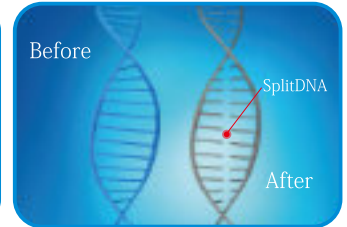
Effectively kill 99.99% mites



Effectively kill parasites



Effectively kill virus



UV irradiation

Ozone-free UV lamp

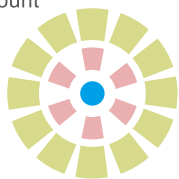
Ultraviolet radiation rays is in a straight line, it is not disinfecting if it is blocked;

U10 UVC LAMP SUGGESTED AREA AND TIME

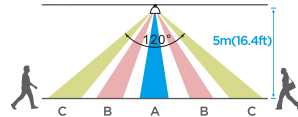
MODEL	Influenza ($\mu\text{W.S/cm}^2$)	Disinfection time for 2.87m ² (1 meter distance to lamp)	Disinfection time for 6.22m ² (1.5 meter distance to lamp)	Disinfection time for 10.85m ² (2 meter distance to lamp)	Disinfection time for 16.76m ² (2.5 meter distance to lamp)	Disinfection time for 23.95m ² (3 meter distance to lamp)	Disinfection time for 42.17m ² (4 meter distance to lamp)
60 Watt	6600	1.276min	3.245min	7.238min	13.299min	27.346min	105.215min
80 Watt		0.781min	1.958min	3.971min	7.711min	14.575min	33.847min

Microwave Sensor Built-in

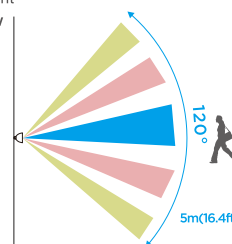
Ceiling Mount
Top View



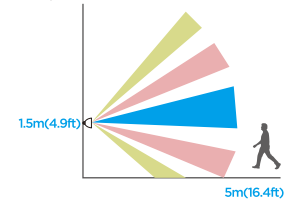
Top View



Wall Mount
Top View

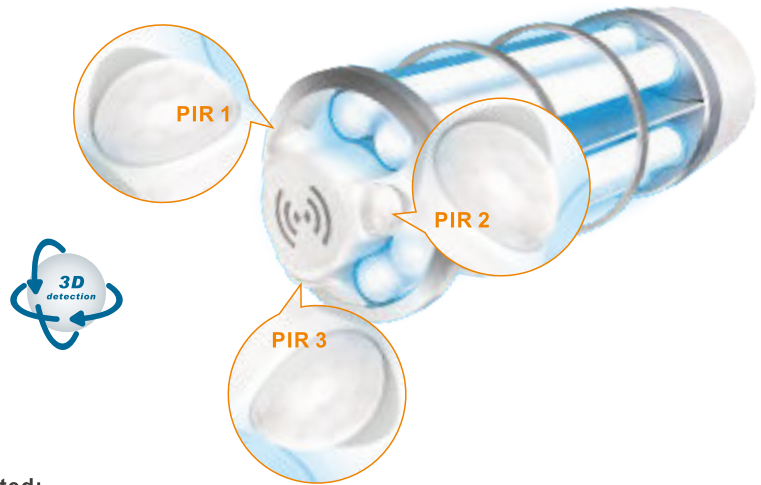
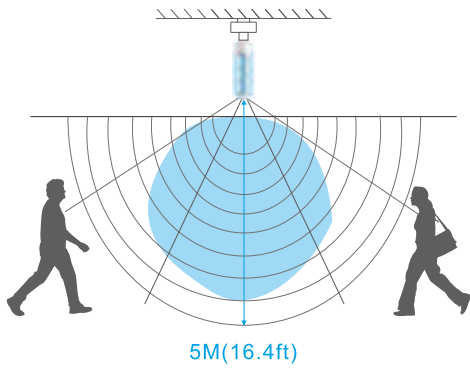


Top View



Features

- **Microwave and PIR Sensor Built-in**



3D sensor detection: 1 Microwave + 3 PIR sensors, automatically turn off when unintended entry detected;

- **Remote Control**



On/off and timing (30/60/90/120 mins) function with wireless remote (there is 20s buzzer sound before the light turns on)

- **Base Options**



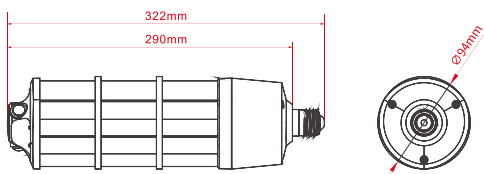
- **Installation Options**

Optional accessories: eyebolt base and tripod (M8 adapter)



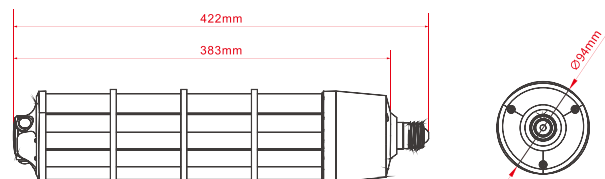
Dimensions

60Watt



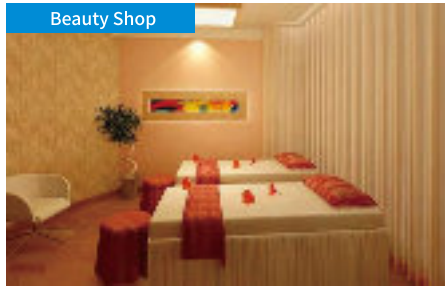
E26 D94XL322mm

80Watt



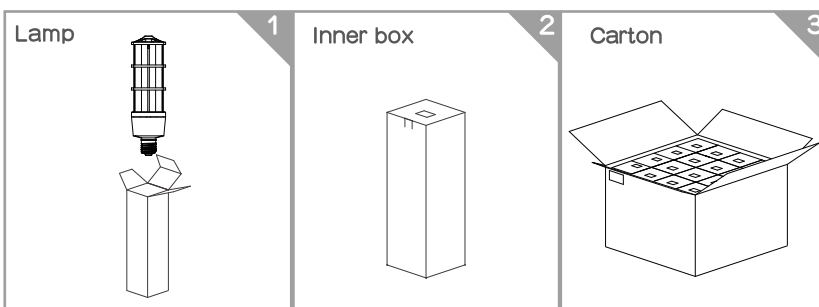
E26 D94XL422mm

Application



Packing

Model No.	Inner box size (mm) (x0.0393=inch)	N.W per lamp (kg) (lbs=kgx2.2)	G.W per lamp (kg) (lbs=kgx2.2)	G.W per Carton (kg) (lbs=kgx2.2)	Carton size (mm) (x0.0393=inch)	Quantity per carton
60 Watt	380x124x124mm	E26 0.92Kg	E26 1.14Kg	E26 14.68Kg	511x387x400mm	12PCS
		E39 0.95Kg	E39 1.17Kg	E39 14.91Kg		
80 Watt	480x124x124mm	E26 1.10Kg	E26 1.35Kg	E26 17.28Kg	511x387x500mm	12PCS
		E39 1.12Kg	E39 1.37Kg	E39 17.58Kg		
L21 (Eyebolt base;E39 Only)	130x130x92mm	0.38Kg	0.496Kg	6.72Kg	535x400x112mm	12PCS
L22-02 (Tripod)	890x136x136mm	2.42Kg	2.795Kg	18.13Kg	905x424x290mm	6PCS



CAUTIONS

- Risk of electric shock. Do not use where directly exposed to water.
- Avoid UV light direct eyes and skin when turn on the lamp.
- Don't take apart the lamps without our permit.

Exxon Lighting Corporation
8388 S Tamiami Trail
Sarasota, 34238

sales@exxonlighting.com
800-769-3221
www.exxonlighting.com